



GREEN HORIZON
v i l l a s

Sea, design, nature:
A dream come true.



Between nature and the sea.
5 minutes from the beaches.



GREEN HORIZON
v i l l a s



Green Horizon

To live at the foot of the mountain, overlooking the Mediterranean Sea, the sun shining and surrounded by the nature of Costa Blanca, can be more than a dream. We tell you that we know how to make it come true; we invite you to visit Green Horizon villas.

Between sea and mountain

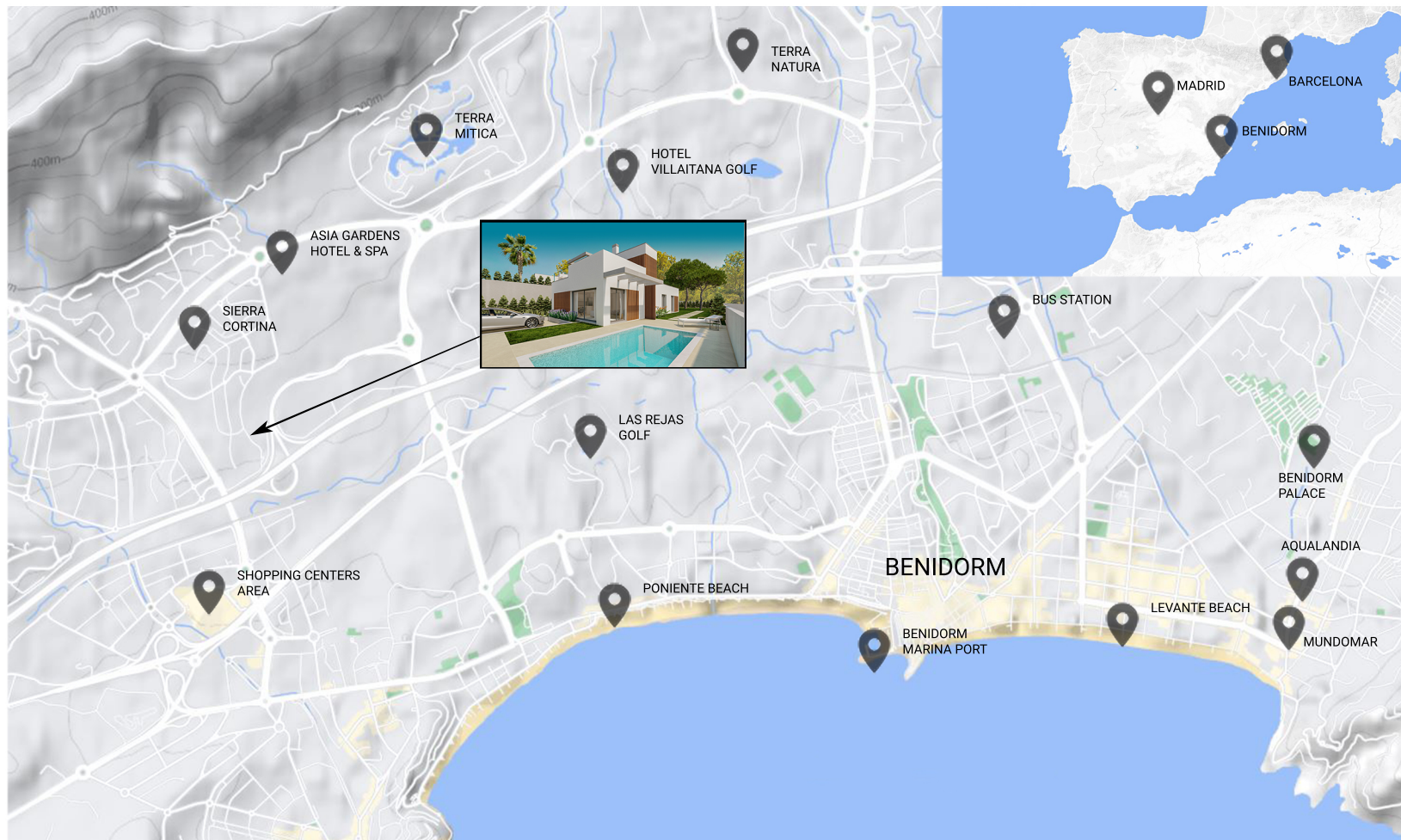
Sierra Cortina Resort is situated near Benidorm, at the foot of the mountains. It is an exclusive estate in the midst of nature, in harmony with the environment.

An excellent place to rest and with a wide offer of activities as golf, water sports, spas and more than 3.000 hours of sun to enjoy through the year.

Idyllic setting

Green Horizon is located among luxurious homes and groves.

Tranquility and comfort reflected on modern luxurious detached houses, only a few kilometers away from beaches and all the services offered by Altea, el Albir and Benidorm.



HOME TYPE A



HOME TYPE A



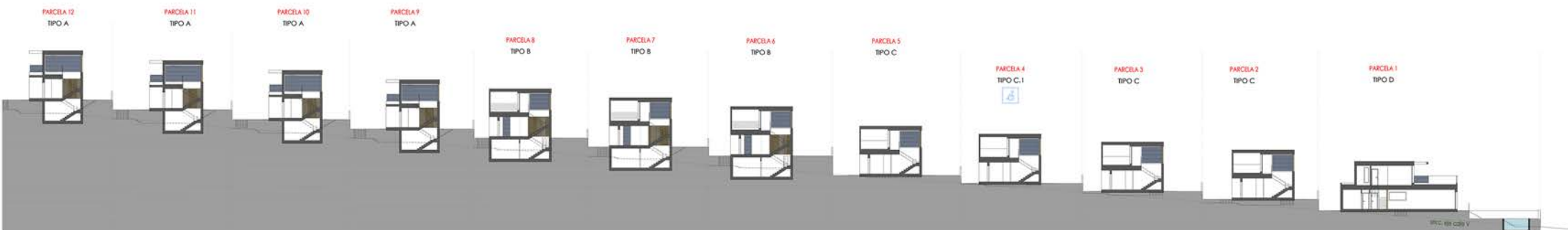
The layout of each house within its land plot is chosen to achieve the greatest space of gardening and comfort and also guarantees the privacy of the residents who can enjoy the peace of the surrounding nature.

In addition to the gardening area around the house, the land plot extends into an additional private green area that spread even more the available space.


But the environment does not only offer peace and quiet, but it also allows you to find places such as:

- Golf courses to enjoy this sport all through the year.
- Yachting clubs to practice all kinds of water activities.
- Commercial and restaurants areas

This is only a small representation of the available offer to anyone wishing to live in our villas in Green Horizon.





A modern, minimalist kitchen and dining area. The kitchen features a long island with a light-colored countertop and a sink. The dining area has a round wooden table with four chairs. Large windows provide a view of a lush garden and a swimming pool. The interior is bright and airy, with recessed ceiling lights and a modern pendant light.

The promotion includes nine villas built with high quality materials and a minimalist and modern design, choosing the combination of noble and natural wood and the light colors that reign over the Costa Blanca.

Enjoying nature is possible thanks to the exclusive terrace that all houses have in addition to the garden. The terrace allows you to admire the wonderful views and to breathe in the Mediterranean air.

Spacious environments illuminated by large windows, where the limits between interior and exterior spaces become blurred, connect the house with the surrounding garden.

Materials, interiors finishing and equipments of the highest quality make of this villa an exclusive product where luxury can be appreciated in every detail.

TIPOLOGY

TYPE A
GROUND FLOOR AND FIRST FLOOR

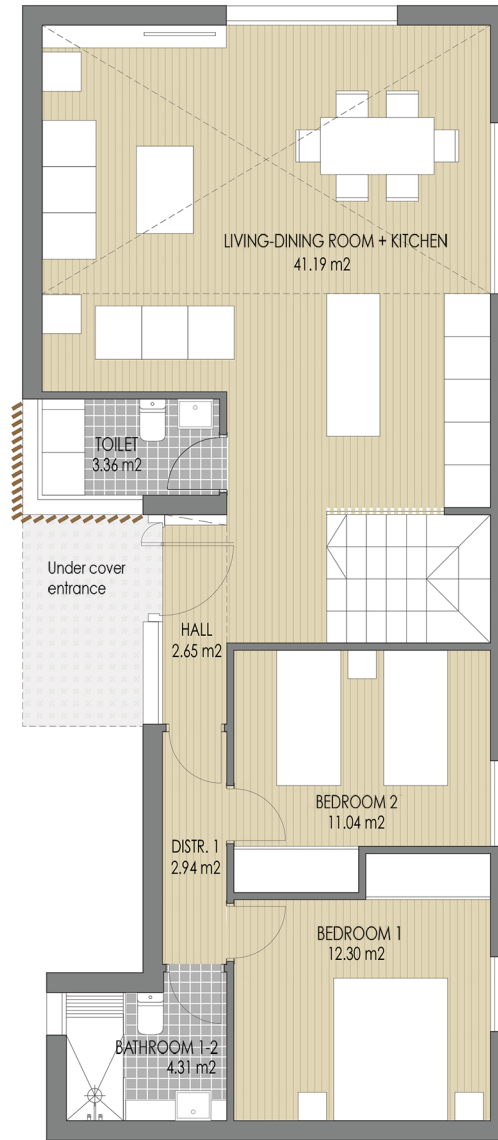
HOUSE AREA

	BASEMENT	GROUND F.	FIRST F.	TOTAL
INDOOR USABLE AREA	41.07 m ²	77.79 m ²	24.16 m ²	143.02 m ²
OUTDOOR USABLE AREA	0.00 m ²	0.00 m ²	18.67 m ²	18.67 m ²
TOTAL USABLE AREA				161.69 m ²
INDOOR BUILT AREA	49.78 m ²	97.22 m ²	31.27 m ²	178.27 m ²
OUTDOOR BUILT AREA	0.00 m ²	5.01 m ²	19.79 m ²	24.80 m ²
TOTAL BUILT AREA				203.07 m ²

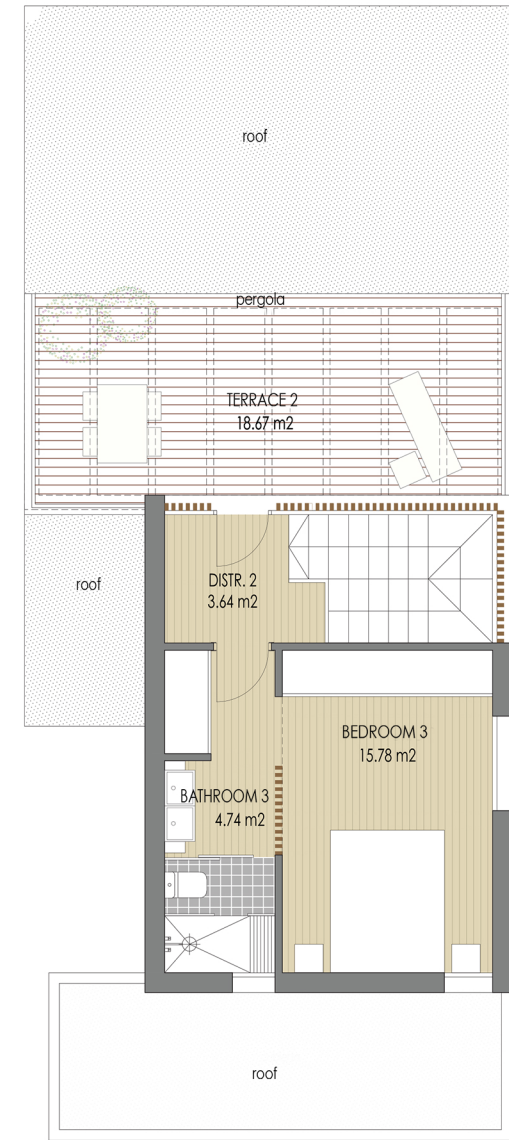
PLOT AREA

PLOT	1	2	3	4	5	6	7	8	9	10	11	12
AREA m ²	533.41	409.43	409.43	409.43	409.43	409.43	409.43	409.43	409.43	396.16	396.16	463.96
AREA m ² attached garden	433.37	229.19	198.77	218.52	210.86	206.06	204.64	203.63	201.24	187.40	183.72	228.81

HOUSING SCHEME



GROUND FLOOR



FIRST FLOOR

NOTE: This document is for informational purposes only. The plans, images, surfaces and dimensions expressed may experience variations due to project requirements. All furniture, cabinets and appliances are purely decorative.

Graphic scale



TIPOLOGY

TYPE A BASEMENT

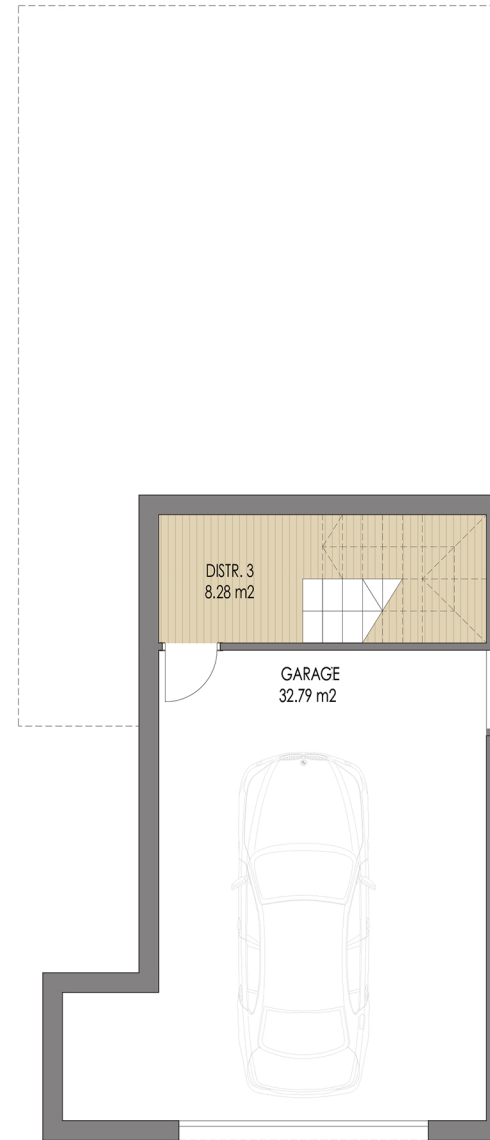
HOUSE AREA

	BASEMENT	GROUND F.	FIRST F.	TOTAL
INDOOR USABLE AREA	41.07 m ²	77.79 m ²	24.16 m ²	143.02 m ²
OUTDOOR USABLE AREA	0.00 m ²	0.00 m ²	18.67 m ²	18.67 m ²
TOTAL USABLE AREA				161.69 m ²
INDOOR BUILT AREA	49.78 m ²	97.22 m ²	31.27 m ²	178.27 m ²
OUTDOOR BUILT AREA	0.00 m ²	5.01 m ²	19.79 m ²	24.80 m ²
TOTAL BUILT AREA				203.07 m ²

PLOT AREA

PLOT	1	2	3	4	5	6	7	8	9	10	11	12
AREA m ²	533.41	409.43	409.43	409.43	409.43	409.43	409.43	409.43	409.43	396.16	396.16	463.96
AREA m ² attached garden	433.37	229.19	198.77	218.52	210.86	206.06	204.64	203.63	201.24	187.40	183.72	228.81

HOUSING SCHEME



BASEMENT

NOTE: This document is for informational purposes only. The plans, images, surfaces and dimensions expressed may experience variations due to project requirements.
All furniture, cabinets and appliances are purely decorative.

yecto.

Graphic scale



HOME TYPE B



HOME TYPE B

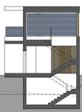


We believe that the peace of mind of living in a safe environment is a value that must be a part of our investment when buying a house.

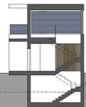
One of the numerous benefits of living in the estate of Sierra Cortina is the existence of a Security Center.

- Video surveillance systems connected with optical fiber both to a control center and to the local police station.

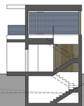
PARCELA 12
TIPO A



PARCELA 11
TIPO A



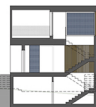
PARCELA 10
TIPO A



PARCELA 9
TIPO A



PARCELA 8
TIPO B



PARCELA 7
TIPO B



PARCELA 6
TIPO B



PARCELA 5
TIPO C



PARCELA 4
TIPO C.1



PARCELA 3
TIPO C



PARCELA 2
TIPO C



PARCELA 1
TIPO D







TIPOLOGY

TYPE B
GROUND FLOOR AND FIRST FLOOR

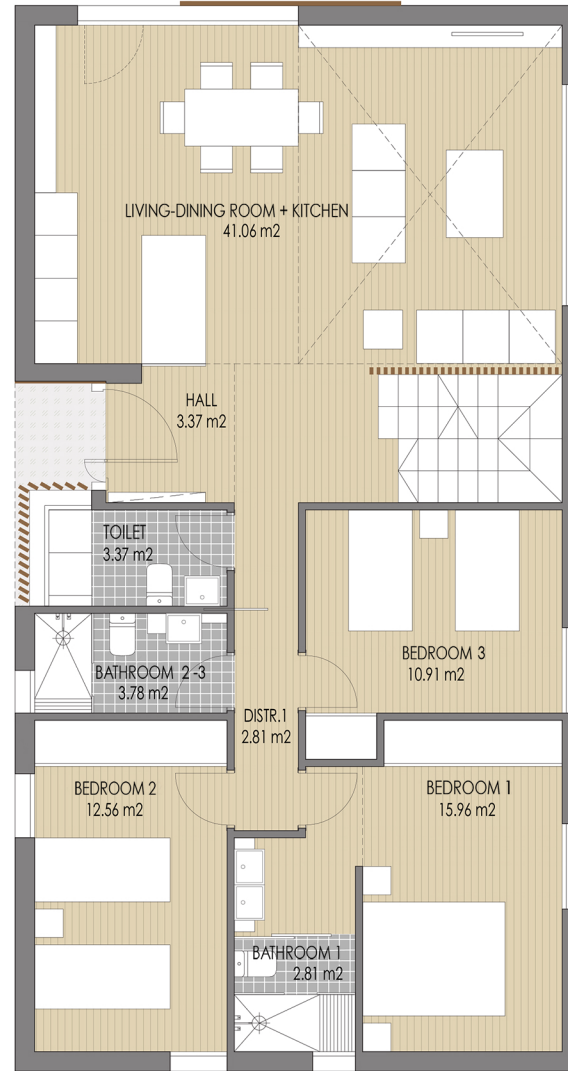
HOUSE AREA

	BASEMENT	GROUND F.	FIRST F.	TOTAL
INDOOR USABLE AREA	69.70 m ²	96.63 m ²	2.16 m ²	168.49 m ²
OUTDOOR USABLE AREA	0.00 m ²	0.00 m ²	24.43 m ²	24.43 m ²
TOTAL USABLE AREA				192.92 m ²
INDOOR BUILT AREA	79.90 m ²	116.88 m ²	5.52 m ²	202.30 m ²
OUTDOOR BUILT AREA	0.00 m ²	1.97 m ²	26.24 m ²	28.21 m ²
TOTAL BUILT AREA				230.51 m ²

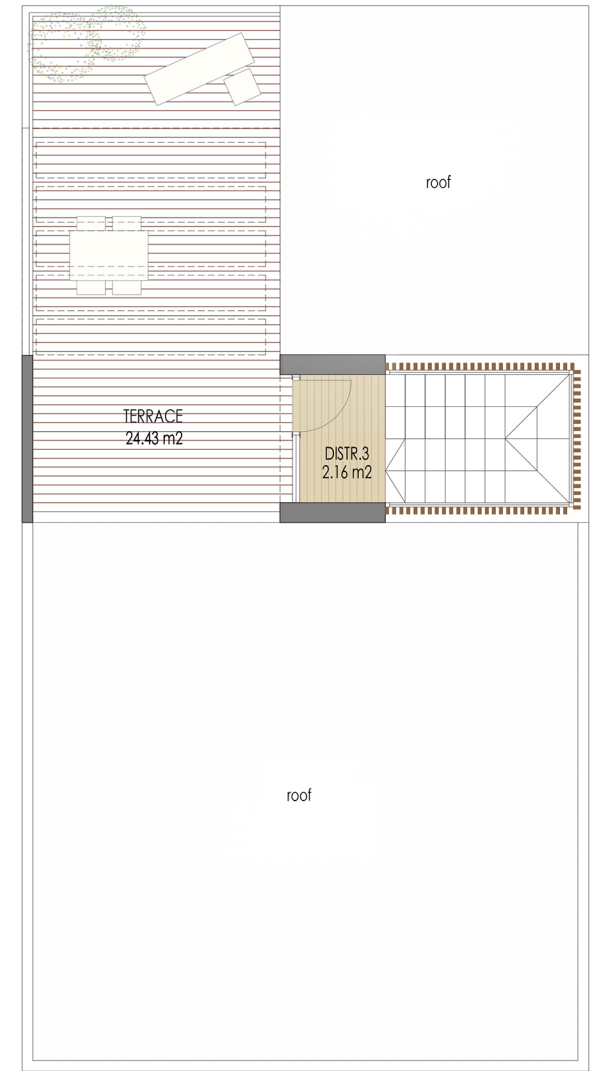
PLOT AREA

PLOT	1	2	3	4	5	6	7	8	9	10	11	12
AREA m ²	533.41	409.43	409.43	409.43	409.43	409.43	409.43	409.43	409.43	396.16	396.16	463.96
AREA m ² attached garden	433.37	229.19	198.77	218.52	210.86	206.06	204.64	203.63	201.24	187.40	183.72	228.81

HOUSING SCHEME



GROUND FLOOR



FIRST FLOOR

NOTE: This document is for informational purposes only. The plans, images, surfaces and dimensions expressed may experience variations due to project requirements. All furniture, cabinets and appliances are purely decorative.

Graphic scale



TIPOLOGY

TYPE B
BASEMENT

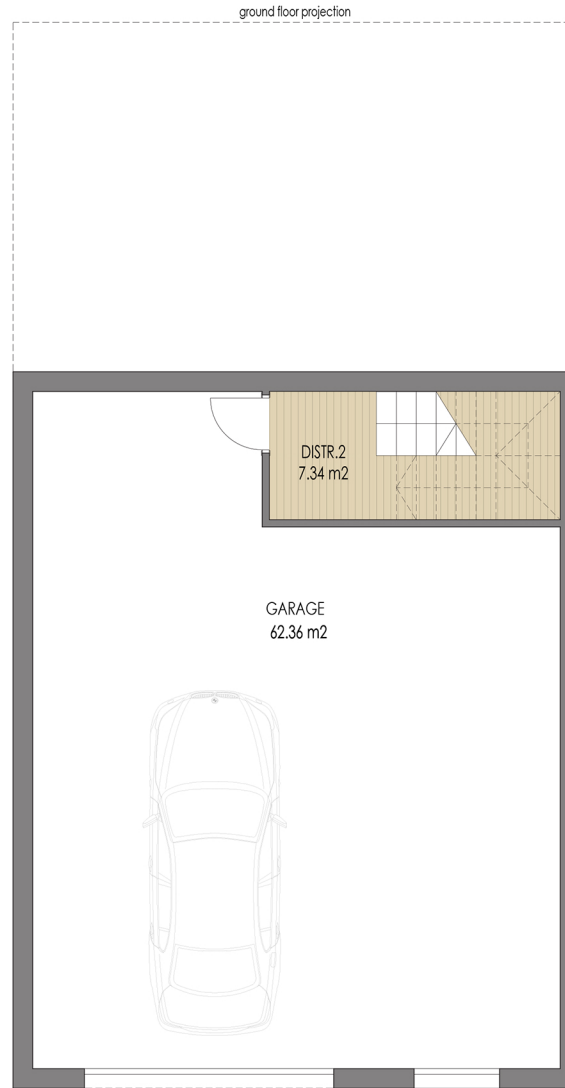
HOUSE AREA

	BASEMENT	GROUND F.	FIRST F.	TOTAL
INDOOR USABLE AREA	69.70 m ²	96.63 m ²	2.16 m ²	168.49 m ²
OUTDOOR USABLE AREA	0.00 m ²	0.00 m ²	24.43 m ²	24.43 m ²
TOTAL USABLE AREA				192.92 m ²
INDOOR BUILT AREA	79.90 m ²	116.88 m ²	5.52 m ²	202.30 m ²
OUTDOOR BUILT AREA	0.00 m ²	1.97 m ²	26.24 m ²	28.21 m ²
TOTAL BUILT AREA				230.51 m ²

PLOT AREA

PLOT	1	2	3	4	5	6	7	8	9	10	11	12
AREA m ²	533.41	409.43	409.43	409.43	409.43	409.43	409.43	409.43	409.43	396.16	396.16	463.96
AREA m ² attached garden	433.37	229.19	198.77	218.52	210.86	206.06	204.64	203.63	201.24	187.40	183.72	228.81

HOUSING SCHEME



BASEMENT

NOTE: This document is for informational purposes only. The plans, images, surfaces and dimensions expressed may experience variations due to project requirements. All furniture, cabinets and appliances are purely decorative.

Graphic scale



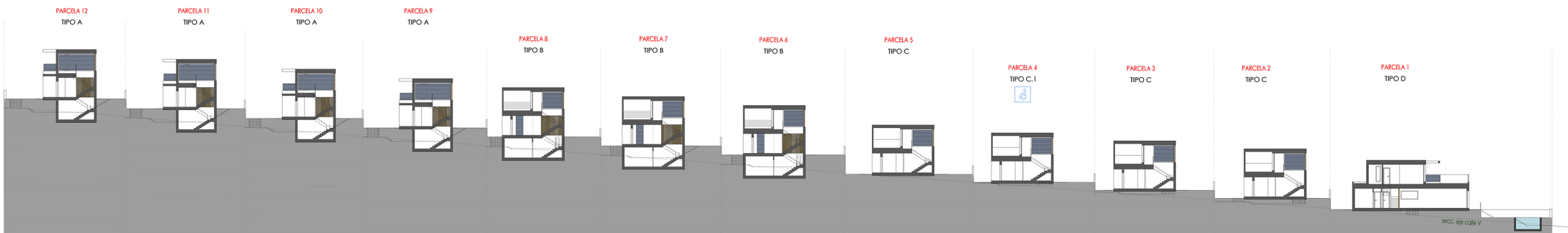
HOME TYPE C



HOME TYPE C

Green Horizon offers a unique place to enjoy the peace and quiet in an unmatched environment between sea and mountain.

Our villas, located in the Sierra Cortina Resort estate, have different types of houses each of them customized according to the customer needs and distributed accommodating the sloping grounds with terracing that allows to enjoy the large green private areas and their own swimming pools.







TYOLOGY

TYPE C

GROUND FLOOR AND FIRST FLOOR

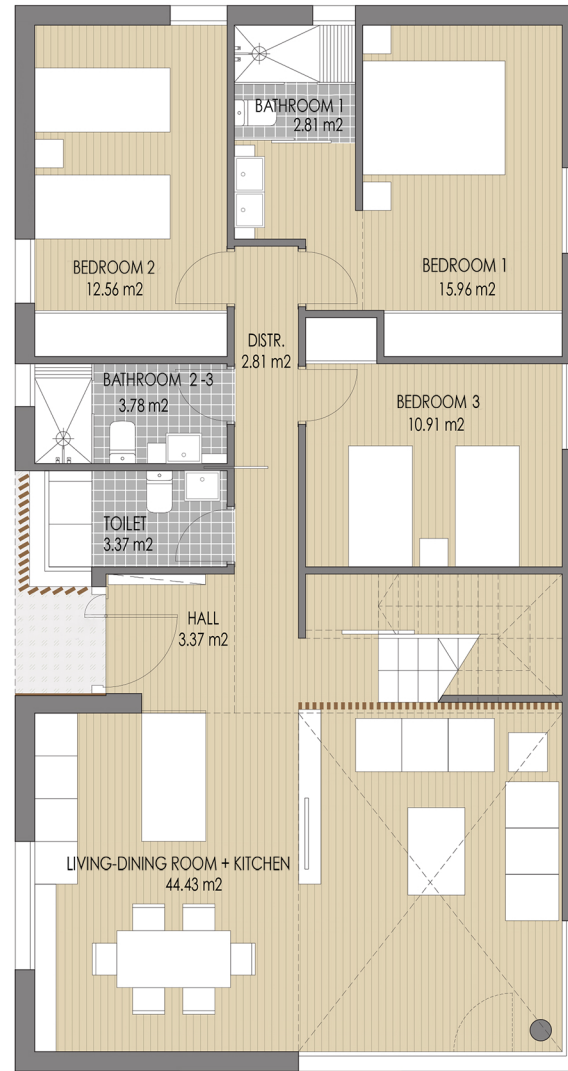
HOUSE AREA

	GROUND F.	FIRST F.	TOTAL
INDOOR USABLE AREA	100.00 m ²	2.16 m ²	102.16 m ²
OUTDOOR USABLE AREA	0.00 m ²	24.43 m ²	24.43 m ²
TOTAL USABLE AREA			126.59 m ²
INDOOR BUILT AREA	116.88 m ²	5.52 m ²	122.40 m ²
OUTDOOR BUILT AREA	1.97 m ²	26.24 m ²	28.21 m ²
TOTAL BUILT AREA			150.61 m ²

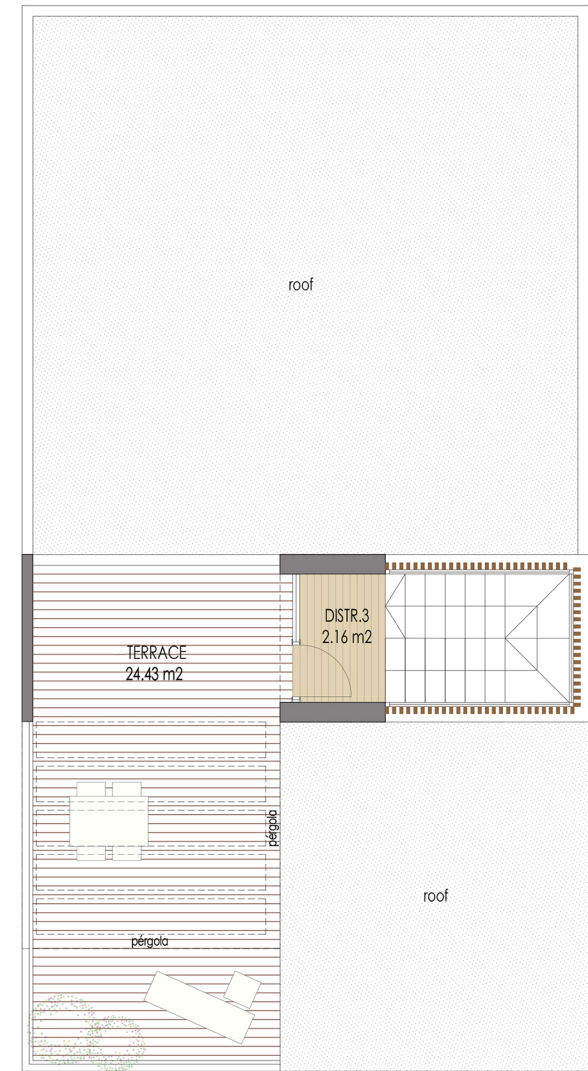
PLOT SURFACE

PLOT	1	2	3	4	5	6	7	8	9	10	11	12
AREA m ²	533.41	409.43	409.43	409.43	409.43	409.43	409.43	409.43	409.43	396.16	463.96	
AREA m ² attached garden	433.37	229.19	198.77	218.52	210.86	206.06	204.64	203.63	201.24	187.40	183.72	228.81

HOUSING SCHEME



GROUND FLOOR



FIRST FLOOR

NOTE: This document is for informational purposes only. The plans, images, surfaces and dimensions expressed may experience variations due to project requirements. All furniture, cabinets and appliances are purely decorative.

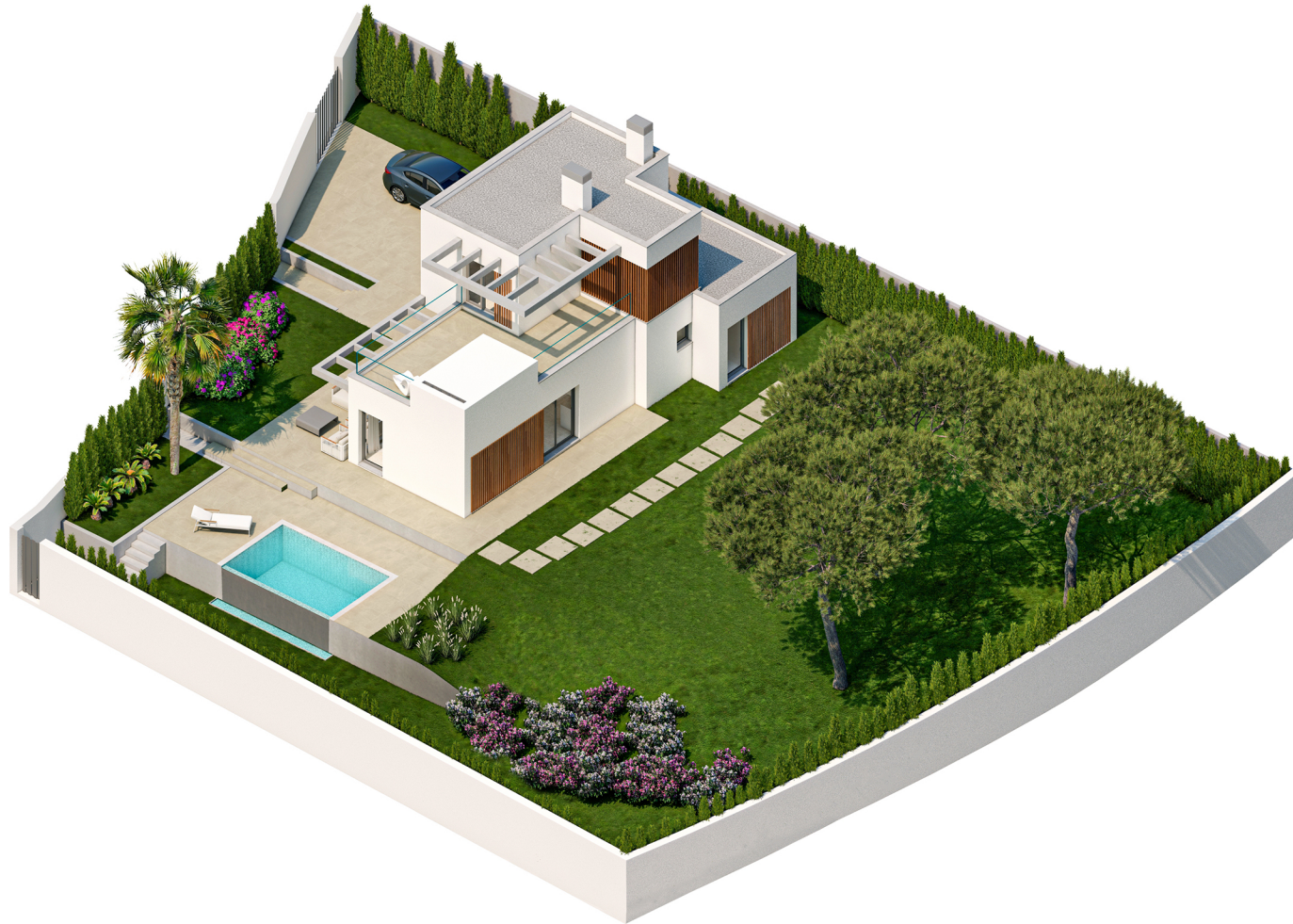
Graphic scale



HOME TYPE D



HOME TYPE D



To acquire a Green Horizon villa is an investment in quality of life.

The houses and their environment offer security, comfort, harmony, energy efficiency and an endless number of benefits that keep up with the highest levels of standards.

All the above in an environment that invites us to think of a fulfilled and happy life, replete with tranquility, but with all the options offered by the surroundings.

Green Horizons villas are not only luxurious exclusive houses/properties; they can be as well your future home.

We told you about a dream. We made it come true. We invite you to visit Green Horizon villas.

PARCELA 12
TIPO A

PARCELA 11
TIPO A

PARCELA 10
TIPO A

PARCELA 9
TIPO A

PARCELA 8
TIPO B

PARCELA 7
TIPO B

PARCELA 6
TIPO B

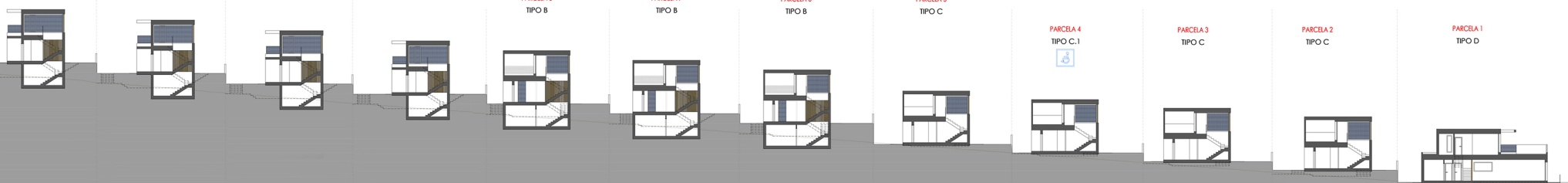
PARCELA 5
TIPO C

PARCELA 4
TIPO C.1

PARCELA 3
TIPO C

PARCELA 2
TIPO C

PARCELA 1
TIPO D



TYOLOGY

TYPE D GROUND FLOOR AND FIRST FLOOR

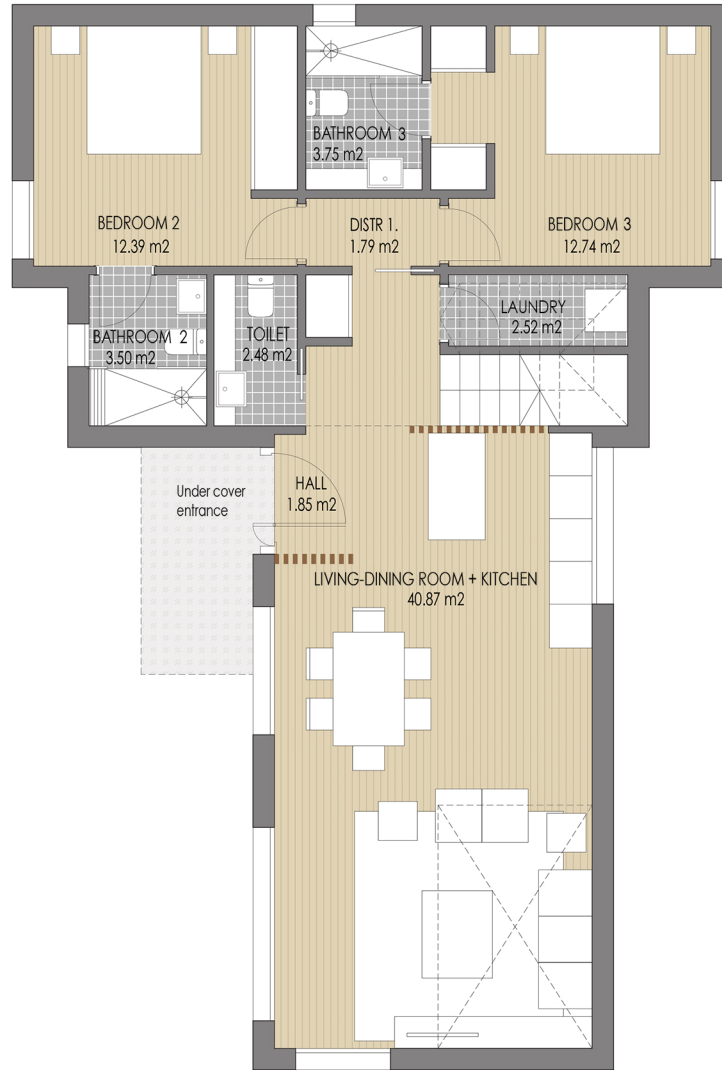
HOUSE AREA

	GROUND F.	FIRST F.	TOTAL
INDOOR USABLE AREA	81.89 m ²	25.39 m ²	107.28 m ²
OUTDOOR USABLE AREA	0.00 m ²	23.73 m ²	23.73 m ²
TOTAL USABLE AREA			131.01 m ²
INDOOR BUILT AREA	102.54 m ²	34.99 m ²	137.53 m ²
OUTDOOR BUILT AREA	5.01 m ²	25.67 m ²	30.68 m ²
TOTAL BUILT AREA			168.21 m ²

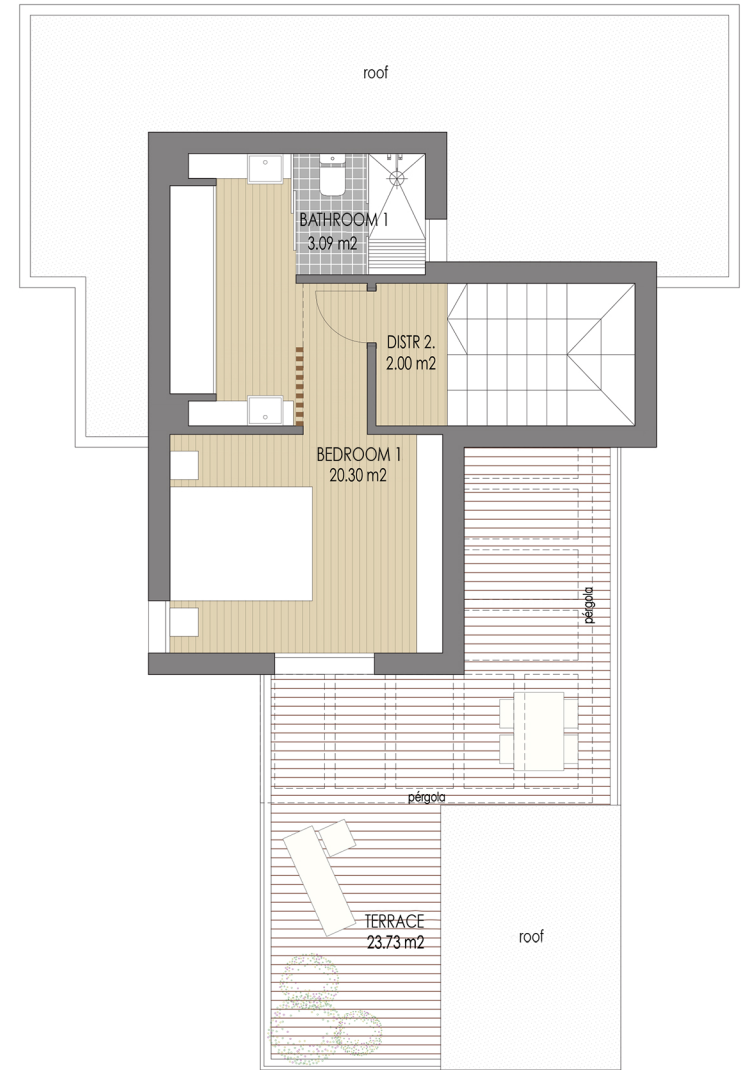
PLOT SURFACE

PLOT	1	2	3	4	5	6	7	8	9	10	11	12
AREA m ²	533.41	409.43	409.43	409.43	409.43	409.43	409.43	409.43	409.43	396.16	396.16	463.96
AREA m ² attached garden	433.37	229.19	198.77	218.52	210.86	206.06	204.64	203.63	201.24	187.40	183.72	228.81

HOUSING SCHEME



GROUND FLOOR



FIRST FLOOR

NOTE: This document is for informational purposes only. The plans, images, surfaces and dimensions expressed may experience variations due to project requirements. All furniture, cabinets and appliances are purely decorative.

Graphic scale



PLOT PLANNING



Plot Area: 3858.43 m²
Buildability: 1234.69 m²



Graphic Scale 0 5 10 20

FOUNDATION AND STRUCTURE



Reinforced concrete structure using unidirectional slabs, stairs, pillars and foundation slab.

Semi-basement and basement walls using reinforced concrete walls.

FACADES / WALLS AND CEILINGS



External enclosure of ceramic brick sheet, thermal / acoustic insulation inside (thickness according to Energy Efficiency calculation) and cladding of double laminated plasterboard, "Pladur" type.

Continuous coating of white monolayer mortar.

Interior divisions with double laminated plasterboard, "Pladur" type, on both sides and acoustic thermal insulation.

Continuous false ceiling made of laminated plasterboard, "Pladur" type with formation of curtain rods in all rooms.

Walls and ceilings of the whole house painted with plastic paint in light color.

FLOORING AND COVERINGS



Interior house floor, kitchen, bathrooms and large-format porcelain terraces,

Bedrooms with laminated flooring.

Terraces finished with large-format ceramic pieces.

Bathrooms and toilet lined with ceramic pieces of different dimensions, according to design.

EXTERNAL WOODWORK



Aluminum doors and windows with thermal break and double glazing with double glazing.

Decorative vertical aluminum slats on the facade.

Motorized blinds in bedrooms. Glass railings embedded in terraces.

Lacquered entrance security door to the house.

Lacquered metal doors according to the architect's design for the entrance to the private plot of each house.

INTERIOR CARPENTRY



Smooth folding interior doors lacquered in matt white.

Cabinets with hinged doors, lined inside with melamine board, with bar, drawers and shelves.

BATHS



Countertop washbasins, Bathco brand or similar, non-slip shower trays, with fixed glass partitions.

Chrome-finish mixer taps in sinks and showers.

KITCHEN



Kitchen furniture, consisting of furniture with a matte or wood laminate finish.

SILESTONE or CERAMIC countertop with undermount sink.

The kitchens are equipped with a refrigerator, induction hob, electric oven, extractor hood, built-in dishwasher and AEG, BOSCH or similar brand microwaves.

ELECTRICAL INSTALLATION



According to Low Voltage Regulations and telecommunications installation for TV / FM and telephony according to regulations.

Interior lighting of the house with recessed spots in false ceilings and on terraces, according to the architect's project.

LEGRAND or similar electrical mechanisms with general USB, TV, Ethernet and Telephone sockets.

Automatic video entry phone installation in individual pedestrian access doors.

PLUMBING FACILITIES, DHW AND AIR CONDITIONING



Production of domestic hot water (DHW) by means of an individual pump "AEROTERMO", with high energy efficiency.

Complete installation of air conditioning hot / cold through ducts.

Electric underfloor heating with thermostat in bathrooms.

PLOT URBANIZATION



Surface parking area with concrete pavement.

Pre-installation of automatic entrance door.

Pool with reinforced concrete basin.

Includes filtration and purification equipment and machinery, and swimming pool lighting.

Solarium flooring with large-format porcelain tiles.

Finished garden, with planting of various fruit trees, plants, areas of natural grass and / or decorative gravels.

Enclosure of plots with plastered and painted concrete walls, and / or simple torsion type metal fences.

Main facade finished with metal fence type slats, on a concrete wall.